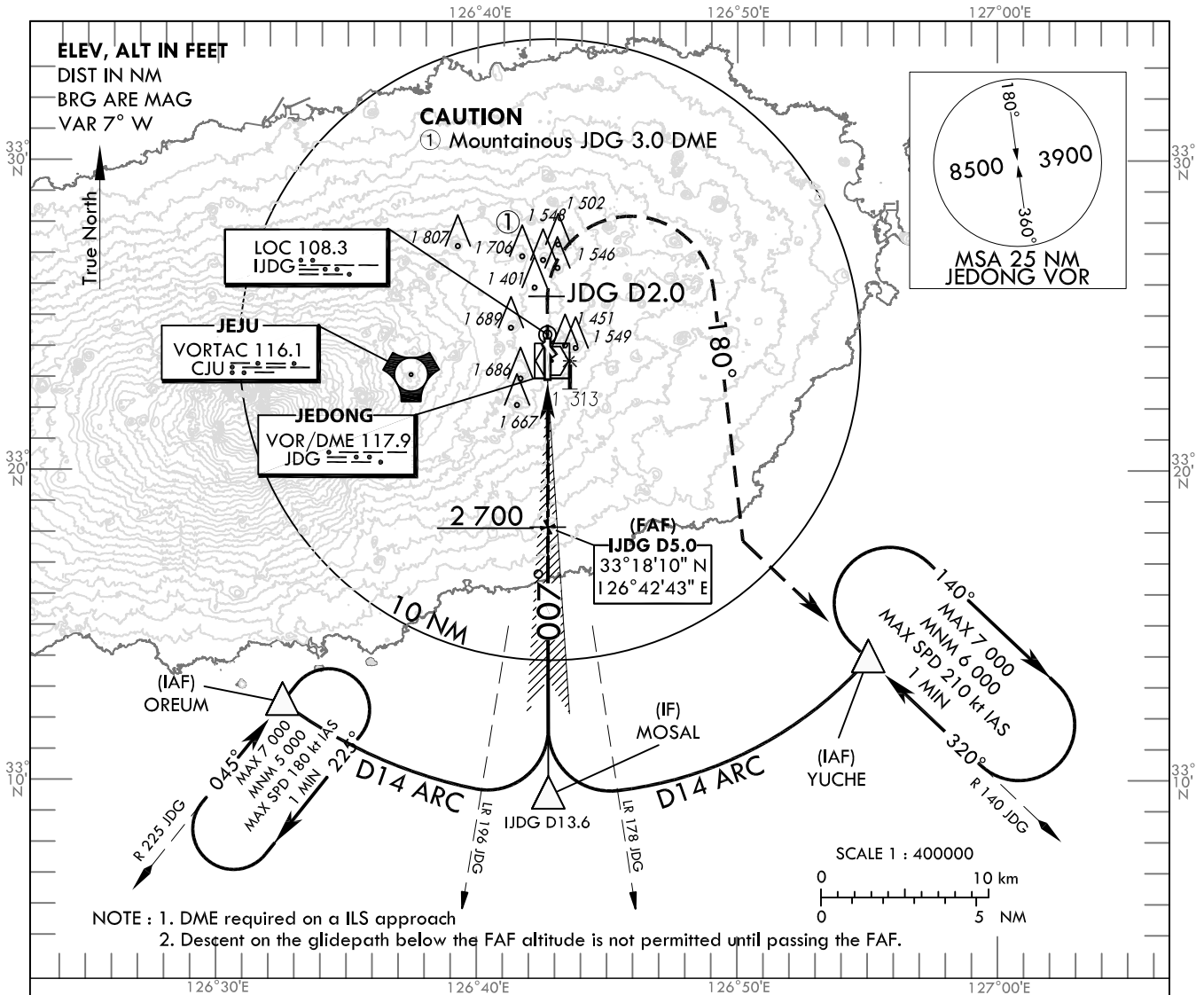


**INSTRUMENT
APPROACH
CHART - ICAO**

AERODROME ELEV 1 174 ft
HEIGHTS RELATED TO
THR RWY 01 - ELEV 1 102 ft

JEJU APP 121.2
124.05
JEONGSEOK TWR 124.35

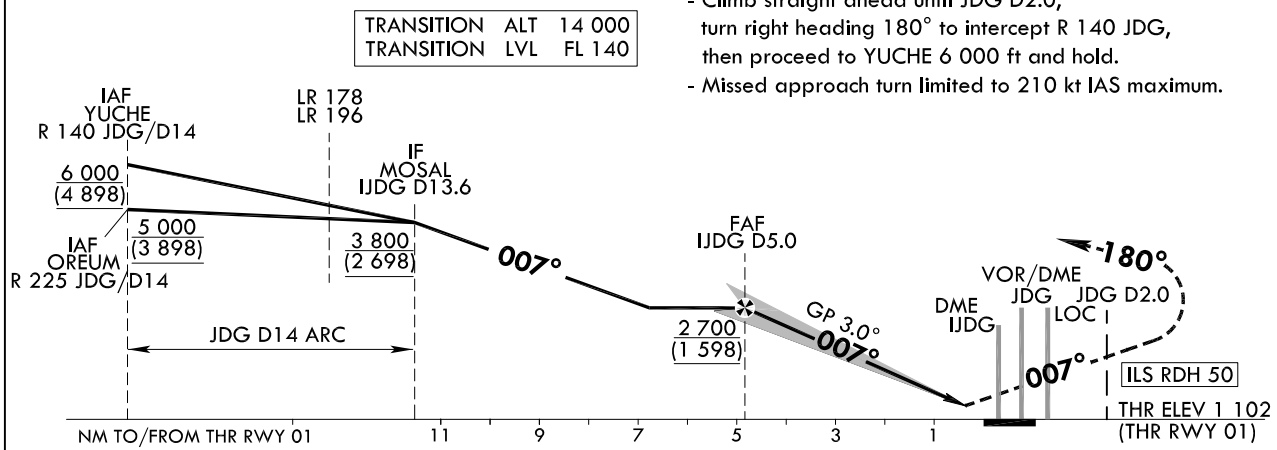
JEJU/Jeongseok(RKPD)
ILS RWY 01



NOTE : 1. DME required on a ILS approach
2. Descent on the glidepath below the FAF altitude is not permitted until passing the FAF.

MISSED APPROACH

- Climb straight ahead until JDG D2.0, turn right heading 180° to intercept R 140 JDG, then proceed to YUCHE 6 000 ft and hold.
- Missed approach turn limited to 210 kt IAS maximum.



CATEGORY		DA(H)	A	B	C	D							
CAT-I (4.0%)	FULL	1 302(200)	RVR 750 m, VIS 800 m										
	ALS INOP		1 200 m										
CAT-I (2.5%)	FULL	1 482(380)	1 600 m				Rate of descent (FAF-THR)	V/V fpm	323	485	646	808	970
	ALS INOP		2 000 m				* Circling Not authorized.						

AERONAUTICAL DATA TABULATION

ILS approach to RWY 01 from YUCHE, OREUM		
Fix/point		Coordinates
YUCHE(IAF)	R 140 JDG/14.00 NM	33°13'55.3"N 126°55'02.3"E
OREUM(IAF)	R 225 JDG/14.00 NM	33°12'29.9"N 126°32'33.2"E
MOSAL(IF)	BRG 186.54°/13.60 NM IJDG	33°09'30.3"N 126°42'46.3"E
D5.0 IJDG (FAF)	BRG 186.54°/4.95 NM IJDG	33°18'10.0"N 126°42'43.3"E
THR RWY01		33°22'58.36"N 126°42'41.71"E
IJDG LOC		33°24'22.7"N 126°42'41.2"E
IJDG DME		33°23'07.8"N 126°42'46.5"E
D2.0 JDG(MATF)	2.00 NM JDG	33°25'31.7"N 126°42'40.8"E
YUCHE(MAHF)	R 140 JDG/14.00 NM	33°13'55.3"N 126°55'02.3"E

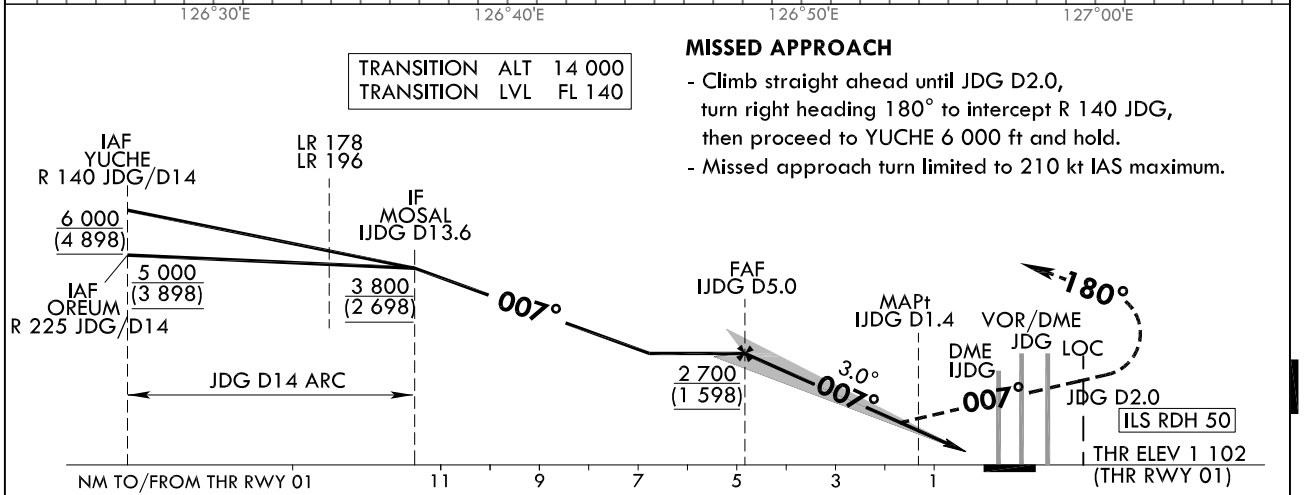
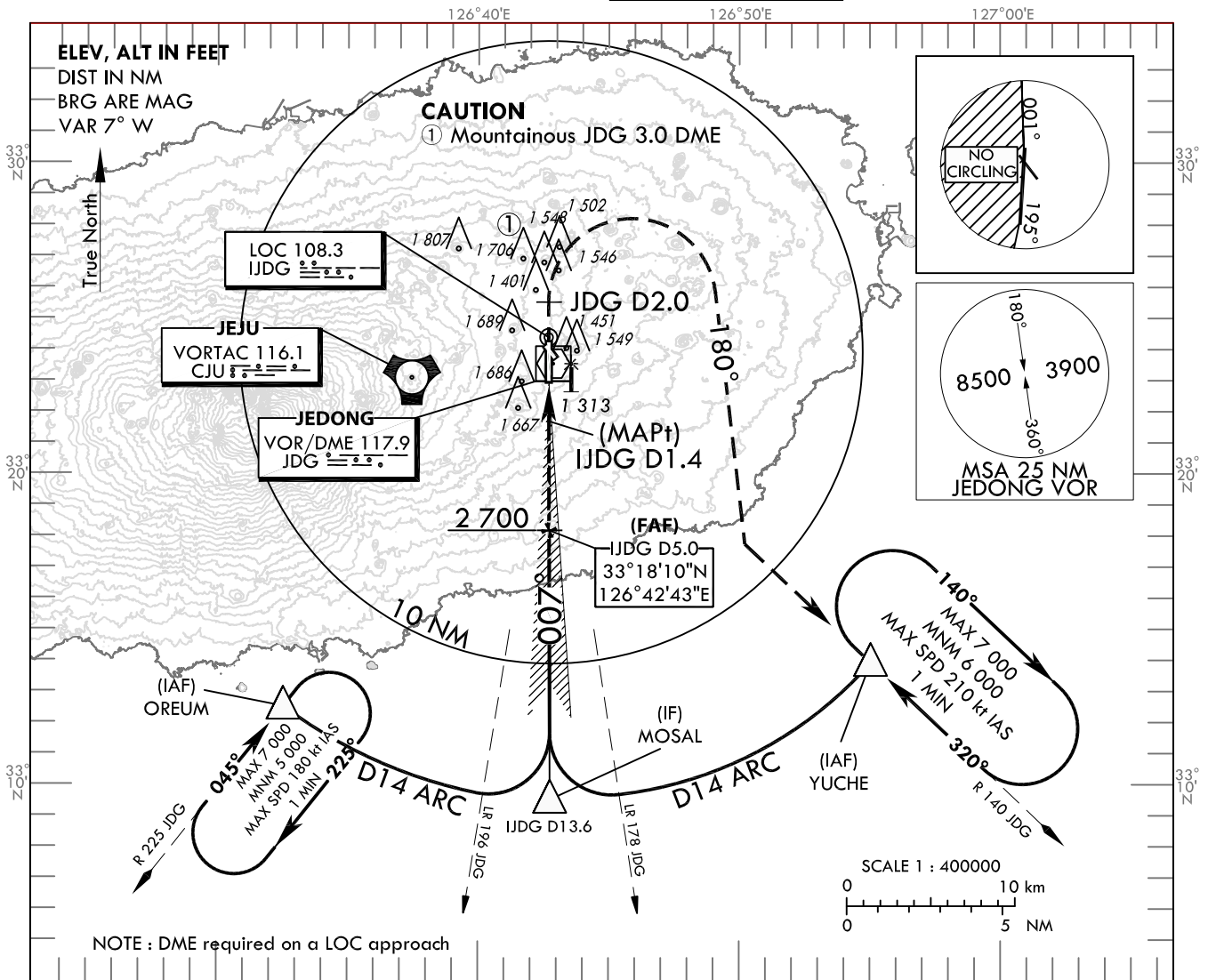
Change : Unit marking standardization(5.0D→D5.0).

**INSTRUMENT
APPROACH
CHART - ICAO**

AERODROME ELEV 1 174 ft
HEIGHTS RELATED TO
THR RWY 01 - ELEV 1 102 ft

JEJU APP 121.2
124.05
JEONGSEOK TWR 124.35

**JEJU/Jeongseok(RKPD)
LOC RWY 01**



CATEGORY		MDA(H)	A	B	C	D				
LOC (4.0%)	FULL	1 580		2 100 m						
	ALS INOP	(478)		2 500 m						
LOC (2.5%)	FULL	1 720		2 900 m						
	ALS INOP	(618)		3 300 m						
		MAX IAS	100	135	180	205				
*Circling			1 900(726)	1 920(746)	2 020(846)					
			3 400 m	3 500 m	3 800 m	4 600 m				
			Rate of descent (FAF-THR)		knots	60	90	120	150	180
			V/V fpm		315	473	630	788	945	

* Timing Not authorized for defining MAPt.
* Circling Not authorized west of RWY 01-19.

Change : Withdrawal of phrases(GP).

AERONAUTICAL DATA TABULATION

LOC approach to RWY 01 from YUCHE, OREUM		
Fix/point		Coordinates
YUCHE(IAF)	R 140 JDG/14.00 NM	33°13'55.3"N 126°55'02.3"E
OREUM(IAF)	R 225 JDG/14.00 NM	33°12'29.9"N 126°32'33.2"E
MOSAL(IF)	BRG 186.54°/13.60 NM IJDG	33°09'30.3"N 126°42'46.3"E
D5.0 IJDG (FAF)	BRG 186.54°/4.95 NM IJDG	33°18'10.0"N 126°42'43.3"E
D1.4 IJDG (MAPt)	BRG 186.54°/1.40 NM IJDG	33°21'43.7"N 126°42'42.1"E
THR RWY01		33°22'58.36"N 126°42'41.71"E
IJDG LOC		33°24'22.7"N 126°42'41.2"E
IJDG DME		33°23'07.8"N 126°42'46.5"E
D2.0 JDG(MATF)	2.00 NM JDG	33°25'31.7"N 126°42'40.8"E
YUCHE(MAHF)	R 140 JDG/14.00 NM	33°13'55.3"N 126°55'02.3"E

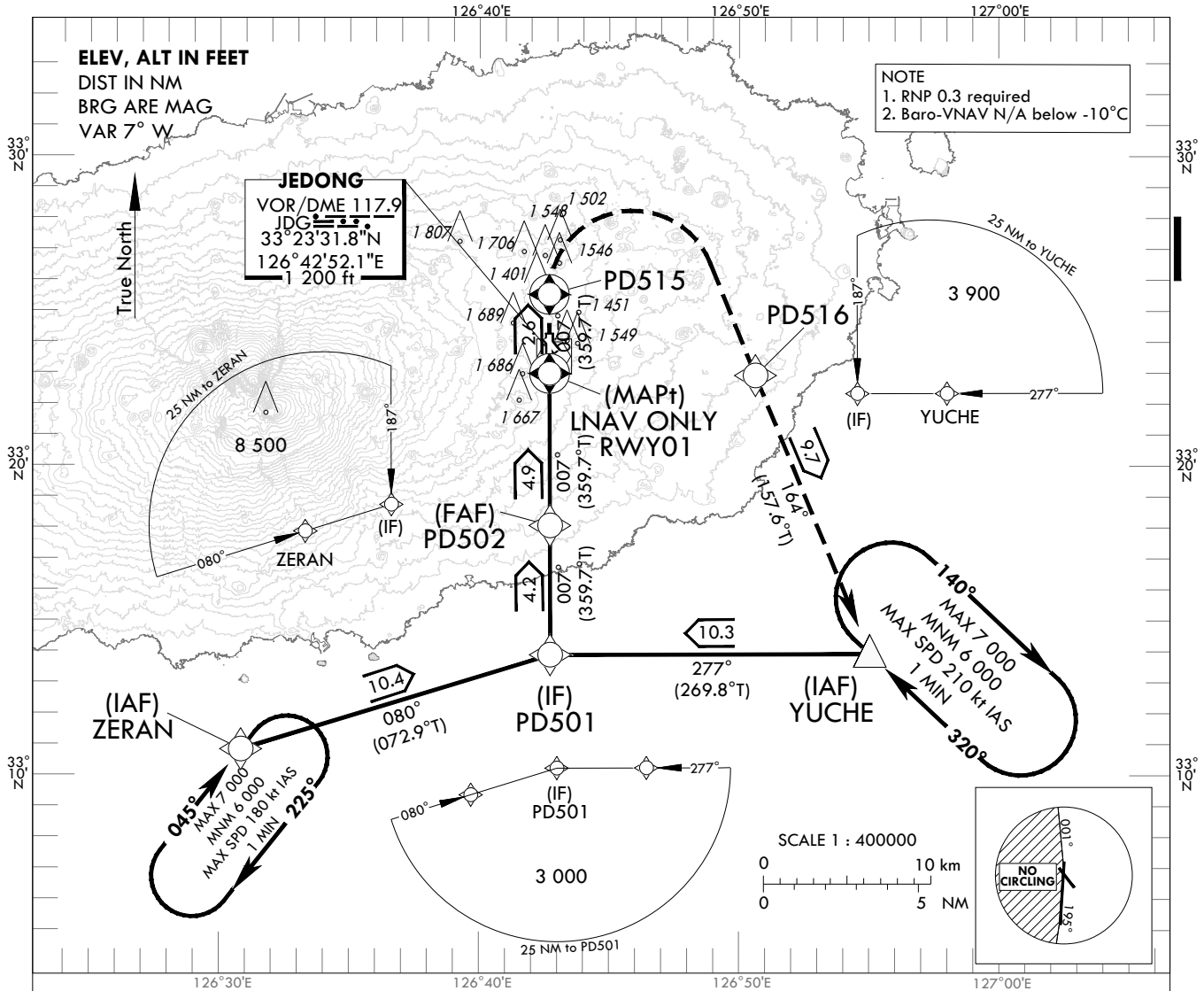
**INSTRUMENT
APPROACH
CHART - ICAO**

AERODROME ELEV 1 174 ft
HEIGHTS RELATED TO
THR RWY 01 - ELEV 1 102 ft

JEJU APP 121.2
124.05
JEONGSEOK TWR 124.35

JEJU/Jeongseok(RKPD)

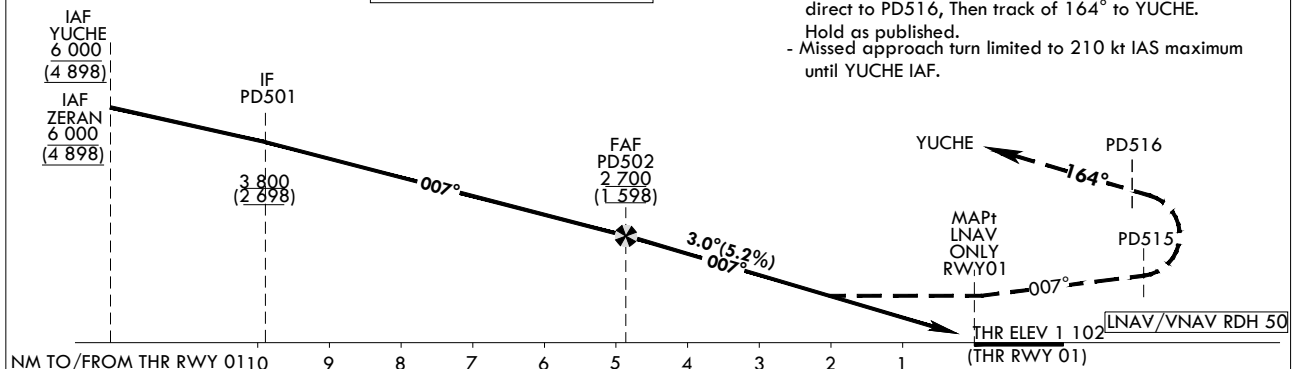
RNAV(GNSS) RWY 01



TRANSITION ALT 14 000
TRANSITION LVL FL 140

MISSED APPROACH

- Climb to 6 000 ft on track of 007° to PD515, Right turn direct to PD516, Then track of 164° to YUCHE. Hold as published.
- Missed approach turn limited to 210 kt IAS maximum until YUCHE IAF.



CATEGORY		A	B	C	D							
LNNAV/VNAV	FULL	2 900 m										
	ALS INOP	3 400 m										
LNAV	FULL	3 600 m										
	ALS INOP	4 000 m										
MAX IAS		100	135	180	205	Rate of descent	knots	60	90	120	150	180
* Circling		1 900 (726)	1 920 (746)	2 020 (846)		V/V fpm	318	478	637	796	955	
		4 000 m						4 600 m				

* Timing not authorized for defining MAPt.
* Circling not authorized west of RWY 01-19.

Change : Amended coordinate format.

Instrument Approach Procedure Coding Tables

RNAV(GNSS) RWY01 - via YUCHE to PD501(IF)

Serial Number	Path Descriptor	Waypoint Identifier	Fly-over	Course/Track °M(°T)	Distance (NM)	Turn direction	Altitude (ft)	Speed (kt)	Coordinates	VPA/TCH	Navigation specification	Remarks
001	IF	YUCHE	-	-	-	-	+6 000	-	33°13'55.3"N 126°55'02.3"E	-	RNP APCH	IAF
002	TF	PD501	-	277(269.8)	10.3	-	+3 800	-	33°13'53.0"N 126°42'44.8"E	-	RNP APCH	IF

RNAV(GNSS) RWY01 - via ZERAN to PD501(IF)

Serial Number	Path Descriptor	Waypoint Identifier	Fly-over	Course/Track °M(°T)	Distance (NM)	Turn direction	Altitude (ft)	Speed (kt)	Coordinates	VPA/TCH	Navigation specification	Remarks
001	IF	ZERAN	-	-	-	-	+6 000	-	33°10'49.1"N 126°30'51.5"E	-	RNP APCH	IAF
002	TF	PD501	-	080(072.9)	10.4	-	+3 800	-	33°13'53.0"N 126°42'44.8"E	-	RNP APCH	IF

RNAV(GNSS) RWY01 - via PD501(IF) to MAHF

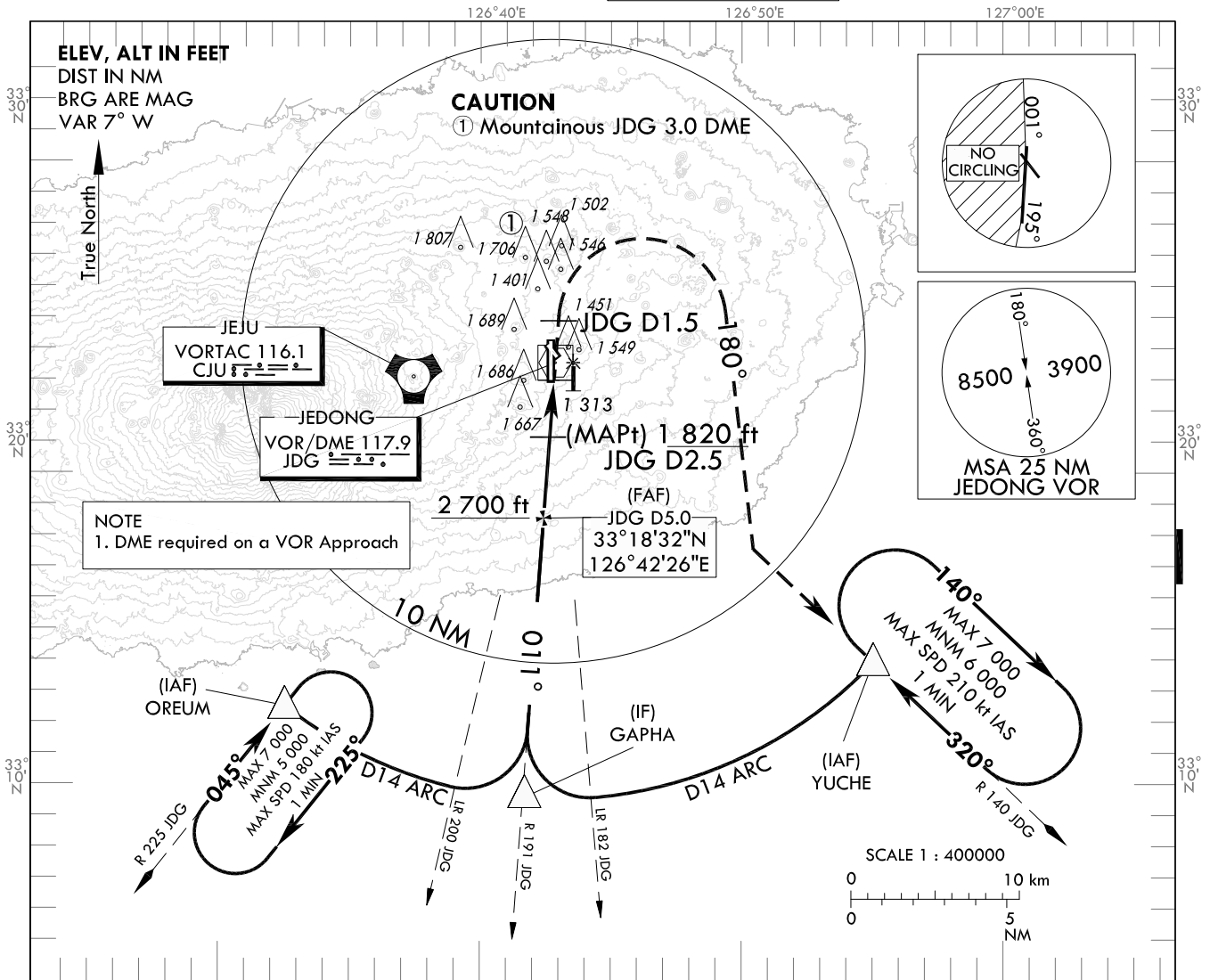
Serial Number	Path Descriptor	Waypoint Identifier	Fly-over	Course/Track °M(°T)	Distance (NM)	Turn direction	Altitude (ft)	Speed (kt)	Coordinates	VPA/TCH	Navigation specification	Remarks
002	TF	PD501	-	-	-	-	+3 800	-	33°13'53.0"N 126°42'44.8"E	-	RNP APCH	IF
003	TF	PD502	-	007(359.7)	4.2	-	+2 700	-	33°18'06.1"N 126°42'43.4"E	-	RNP APCH	FAF
004	TF	RWY01	Y	007(359.7)	4.9	-	+1 830	-	33°22'58.4"N 126°42'41.7"E	3.00/50	RNP APCH	MAPt
005	TF	PD515	Y	007(359.7)	2.6	-	-	-210	33°25'31.7"N 126°42'40.8"E	-	RNP APCH	-
006	DF	PD516	-	-	-	R	-	-210	33°22'55.2"N 126°50'37.5"E	-	RNP APCH	-
007	TF	YUCHE	Y	164(157.6)	9.7	-	-	-210	33°13'55.3"N 126°55'02.3"E	-	RNP APCH	Orbround time 1 min
008	HM	YUCHE	Y	320(313.3)	-	R	-7 000 +6 000	-210	33°13'55.3"N 126°55'02.3"E	-	RNP APCH	

**INSTRUMENT
APPROACH
CHART - ICAO**

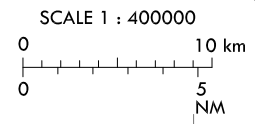
AERODROME ELEV 1 174 ft
HEIGHTS RELATED TO
THR RWY 01 - ELEV 1 102 ft

JEJU APP 121.2
124.05
JEONGSEOK TWR 124.35

**JEJU/Jeongseok(RKPD)
VOR RWY 01**



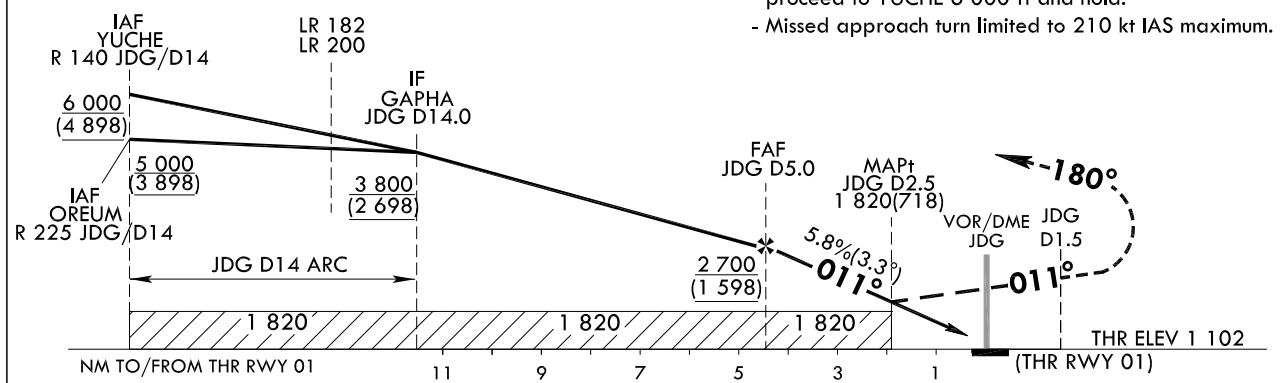
NOTE
1. DME required on a VOR Approach



TRANSITION ALT 14 000
TRANSITION LVL FL 140

MISSED APPROACH

- Climb straight ahead until JDG D1.5, turn right heading 180 to intercept R 140 JDG, then proceed to YUCHE 6 000 ft and hold.
- Missed approach turn limited to 210 kt IAS maximum.



CATEGORY		MDA(MDH)	A	B	C	D							
VOR	FULL	1 820	3 200 m										
	ALS IONP	(718)	3 600 m										
MAX IAS			100	135	180	205	Rate of descent (FAF-THR)	knots	60	90	120	150	180
*Circling			1 900(726)	1 920(746)	2 020(846)		V/V fpm	352	528	704	880	1056	
			3 600 m		3 800 m	4 600 m	* Timing not authorized for defining MAPt. * Circling not authorized west of RWY 01-19.						

Change : Amended coordinate format.

JEJU/Jeongseok(RKPD)
VOR RWY 01

AERONAUTICAL DATA TABULATION

VOR approach to RWY 01 from YUCHE, OREUM		
Fix/point		Coordinates
YUCHE(IAF)	R 140 JDG/14.00 NM	33°13'55.3"N 126°55'02.3"E
OREUM(IAF)	R 225 JDG/14.00 NM	33°12'29.9"N 126°32'33.2"E
GAPHA(IF)	BRG 191.00°/14.00 NM JDG	33°09'32.5"N 126°41'39.1"E
D5.0 JDG (FAF)	BRG 191.00°/5.00 NM JDG	33°18'32.1"N 126°42'26.0"E
D2.5 JDG (MAPt)	BRG 191.00°/2.50 NM JDG	33°21'02.0"N 126°42'39.0"E
THR RWY01	Final approach descent angle 3.30°	33°22'58.36"N 126°42'41.71"E
JDG VOR/DME		33°23'31.8"N 126°42'52.1"E
D1.5 JDG (MATF)	1.50 NM JDG	33°25'01.8"N 126°42'59.9"E
YUCHE(MAHF)	R 140 JDG/14.00 NM	33°13'55.3"N 126°55'02.3"E